



6/24-28 Port Hacking Road Sylvania NSW

1 1 1

Perfectly positioned for convenience and lifestyle, this beautifully refreshed apartment offers an outstanding opportunity for first home buyers, downsizers or investors seeking low-maintenance living in a highly connected location. Ideally located moments from local shopping centres, local waterways and only a short drive to the beaches, cafés and vibrant lifestyle of Cronulla, the home delivers comfort, style and everyday ease with a bright, sunny atmosphere throughout.

Fresh white interiors enhance the sense of space and natural light, while stylish timber style floorboards flow seamlessly throughout the apartment to create a warm and modern feel. The renovated kitchen is both functional and contemporary, complete with stone benchtops, quality poly

Type : Apartment

Price : \$540,000 - \$590,000

View : <https://www.mitchellestateagents.com.au/8700317>

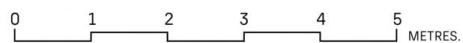
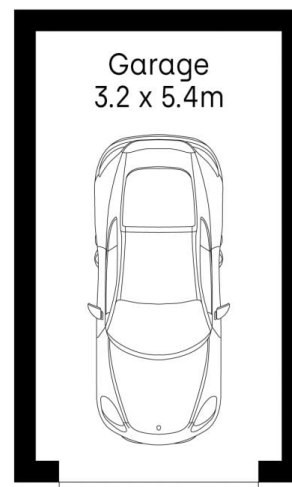
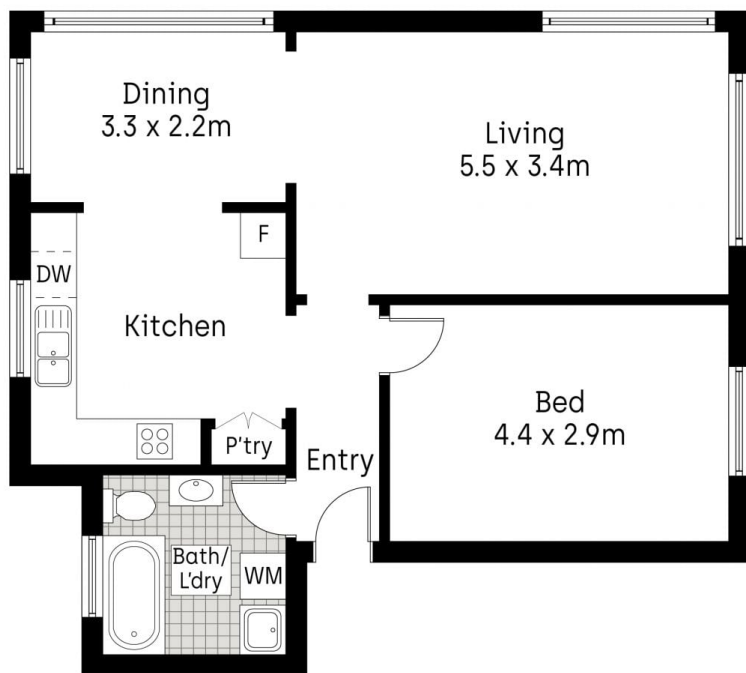


James Mitchell
0405 951 570



Jade Ferguson
0405 951 570

[For full version visit the website](https://www.mitchellestateagents.com.au)



Whilst **Habitat Creative Sydney** has made every attempt to ensure the accuracy of the floor plan contained here, measurements are approximate and no responsibility is taken for any error, omission, or mis-statement. This plan is for illustrative purposes only.

6/24 Port Hacking Road, Sylvania

Mitchell Estate Agents