



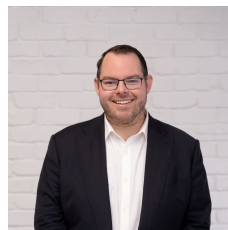
**3/732-734 Kingsway Gymea NSW**

**3**  **1**  **1** 

Beautifully presented and filled with natural light, this stylishly updated home offers effortless living in an ultra-convenient Gymea location. Designed for comfort and functionality, the open-plan interiors flow through the living, dining and kitchen zones to a private open entertaining area, perfect for relaxed indoor-outdoor living.

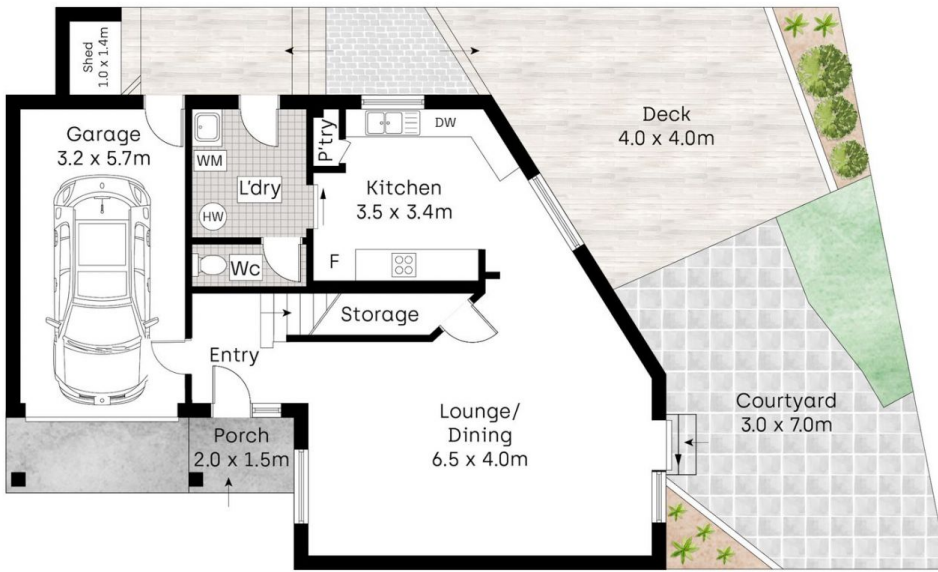
Encompassing three carpeted bedrooms, a newly renovated main bathroom, and a single car garage with internal access, this residence combines warmth, practicality, and low-maintenance appeal. Perfect for downsizers, young families or investors alike, it's positioned just moments from Gymea's vibrant shopping precinct, local cafés, quality schools and public transport.

**Type** : Townhouse  
**Price** : \$ 1,350,000  
**Land Size** : 193 sqm  
**View** : <https://www.mitchellestateagents.com.au/8638600>

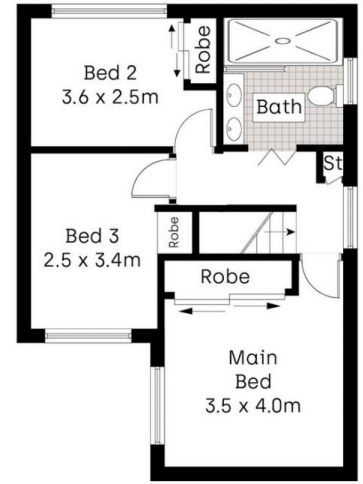


**James Mitchell**  
**0405 951 570**

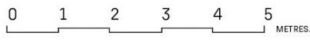
[For full version visit the website](https://www.mitchellestateagents.com.au)



Ground Floor



First Floor



Whilst [bwrn.com.au](http://bwrn.com.au) has made every attempt to ensure the accuracy of the floor plan contained here, measurements are approximate and no responsibility is taken for any error, omission, or mis-statement. This plan is for illustrative purposes only.

3/732-734 Kingsway, Gymea

**Mitchell** Estate Agents