



**3/15 Foch Avenue Gymea NSW**

**3**  **2**  **2** 

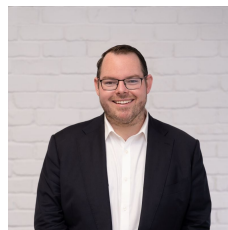
Ideally positioned within a boutique complex in a central pocket of Gymea, this well-presented townhouse offers generous interiors, modern updates, and a sunny outdoor courtyard perfect for entertaining. Privately set away from the street, the home combines comfort and convenience with an impressively versatile floorplan with bright, airy interiors throughout. Located moments from local shops, schools, cafés, and public transport, this home provides an ideal opportunity for families, downsizers, or investors alike seeking low maintenance living in a tightly held locale.

Features Include:

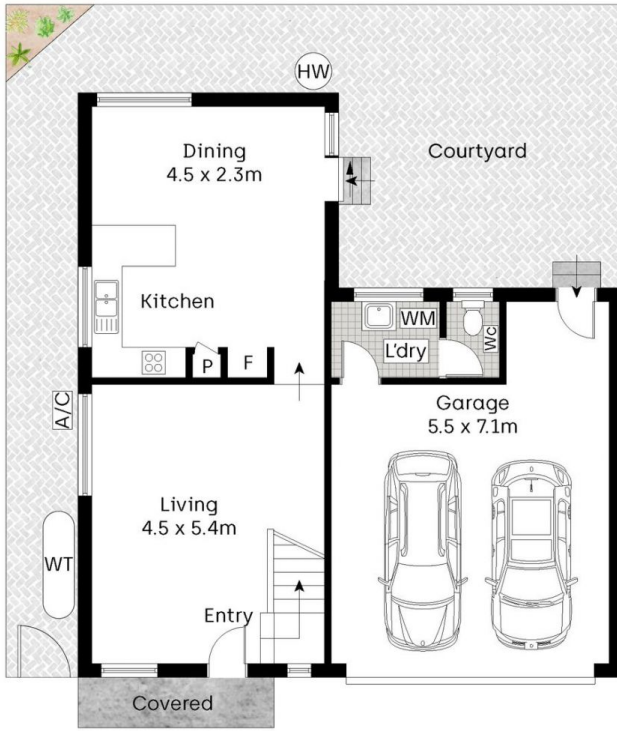
? Light-filled lounge room positioned at the front of the home with timber-style flooring and air-con, flowing

[For full version visit the website](https://www.mitchellestateagents.com.au/8536376)

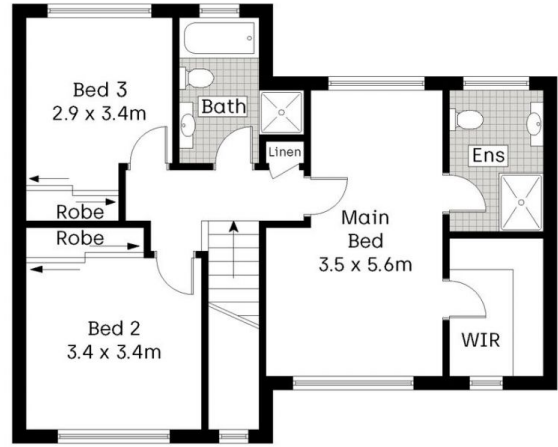
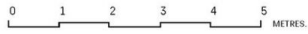
**Type** : Townhouse  
**Price** : \$ 1,300,000  
**Land Size** : 211 sqm  
**View** : <https://www.mitchellestateagents.com.au/8536376>



**James Mitchell**  
0405 951 570



Ground Floor



First Floor



Whilst [bwrn.com.au](http://bwrn.com.au) has made every attempt to ensure the accuracy of the floor plan contained here, measurements are approximate and no responsibility is taken for any error, omission, or mis-statement. This plan is for illustrative purposes only.

3/15 Foch Avenue, Gymea

**Mitchell** Estate Agents