



## 298 Sylvania Road South Gymea Bay NSW

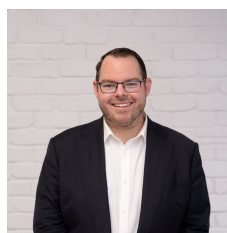
4 1 2

Offered to the market for the first time in over 65 years, this much-loved family home presents a rare opportunity to secure a charming, spacious residence within one of Gymea Bay's most tightly held and family-focused pockets. Set on an ideal parcel of land, the property offers expansive single level living with versatile interiors ideal for growing families, and builders or renovators seeking a prime Gymea Bay address.

Peacefully positioned on a quiet street surrounded by quality homes, the residence combines comfort, timeless 1960's charm and exciting future potential. Enjoy the convenience of being just moments from local schools, shops, cafés, parks and transport, making this a truly exceptional lifestyle offering for the discerning buyer.

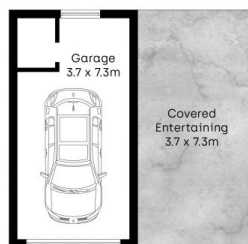
**Type** : House

**View** : <https://www.mitchellestateagents.com.au/851828>  
2



**James Mitchell**  
0405 951 570

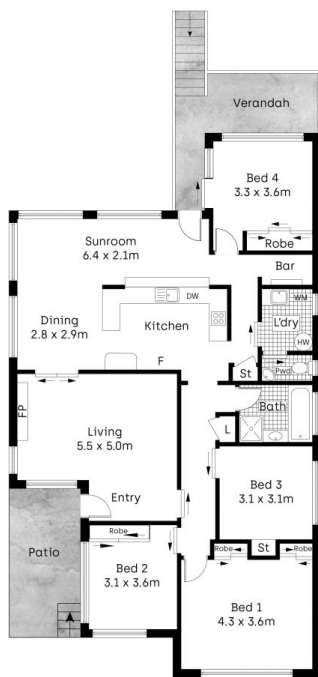
[For full version visit the website](https://www.mitchellestateagents.com.au)



[Not In Position]



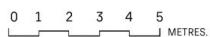
[Not In Position]



Ground Floor



Site Plan



Whilst [bwr.com.au](http://bwr.com.au) has made every attempt to ensure the accuracy of the floor plan contained here, measurements are approximate and no responsibility is taken for any error, omission, or mis-statement. This plan is for illustrative purposes only.

298 Sylvania Road South, Gymea Bay

**Mitchell** Estate Agents