



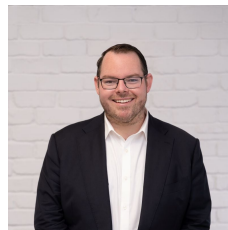
## 21 Green Street Cronulla NSW

5 3 1

Tucked within one of Cronulla's most convenient and tightly held pockets, this expansive family home sits on a level 600sqm (approx) parcel across two separate lots, offering a rare opportunity for those looking to move-in, expand, or rebuild/develop in a prized beachside location (STCA). Just a short walk to Woolooware Station, Cronulla's beaches, shops and buzzing cafés, the home delivers a lifestyle of ease, space, and serious potential. Whether you're upsizing, investing or exploring options for dual living, the layout offers flexibility rarely found.

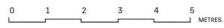
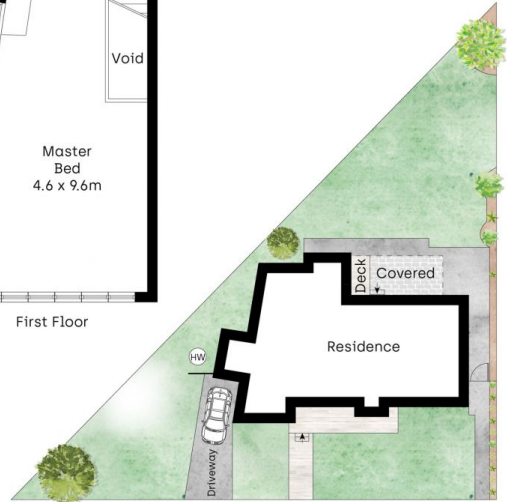
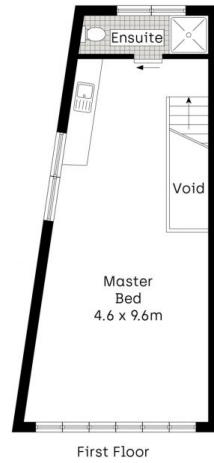
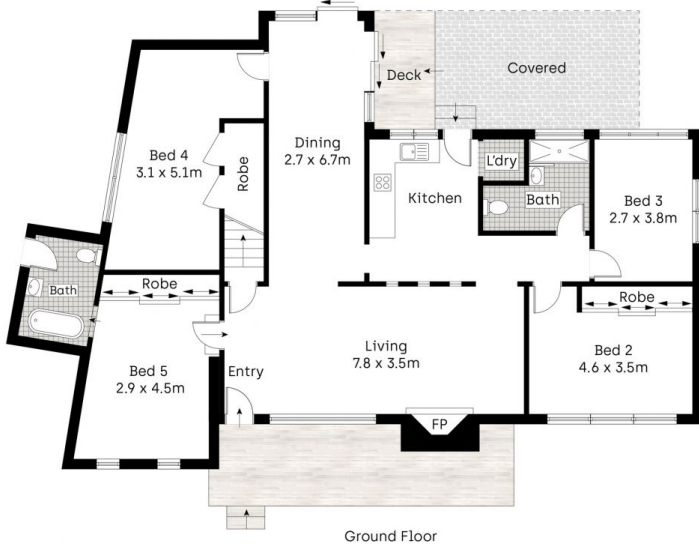
Set over two generous levels, the home includes a light-filled open plan living and dining zone that flows out to a sunny, child-friendly backyard with space to entertain. The upper level features provision for a kitchenette and

**Type** : House  
**Land Size** : 600 sqm  
**View** : <https://www.mitchellestateagents.com.au/8465388>



**James Mitchell**  
0405 951 570

[For full version visit the website](https://www.mitchellestateagents.com.au)



Whilst [bwrn.com.au](http://bwrn.com.au) has made every attempt to ensure the accuracy of the floor plan contained here, measurements are approximate and no responsibility is taken for any error, omission, or mis-statement. This plan is for illustrative purposes only.

21 Green Street, Cronulla

**Mitchell** Estate Agents