



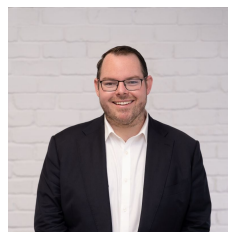
3 Bangalee Place Bangor NSW

3 2 2

Offered to the market for the first time in over 35 years, this much-loved family home presents a rare opportunity to secure a generous residence in one of Bangor's most tightly held and family focused pockets. Positioned on a substantial 701.70 sqm parcel, the home offers an expansive and versatile, split-level layout perfectly suited to growing families, with endless scope to update or modernise. Set just off a quiet cul-de-sac, surrounded by quality homes, and just moments to local schools, shops, cafes, parks, and transport options, this property combines comfort, 80's charm, and endless potential for the discerning purchaser.

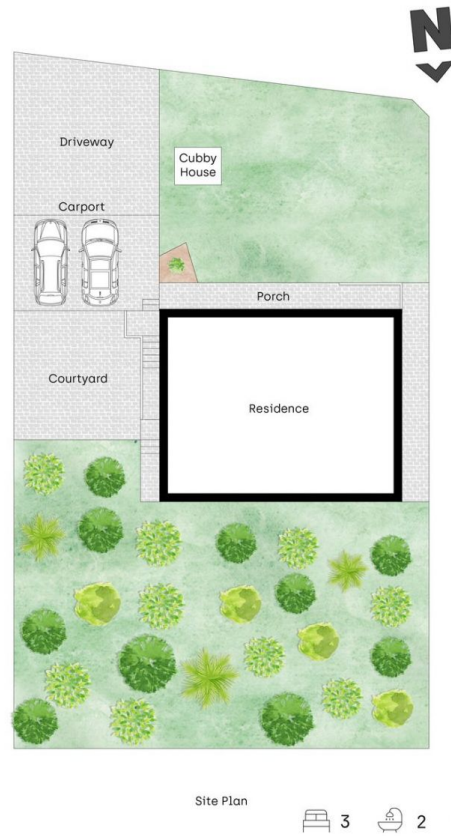
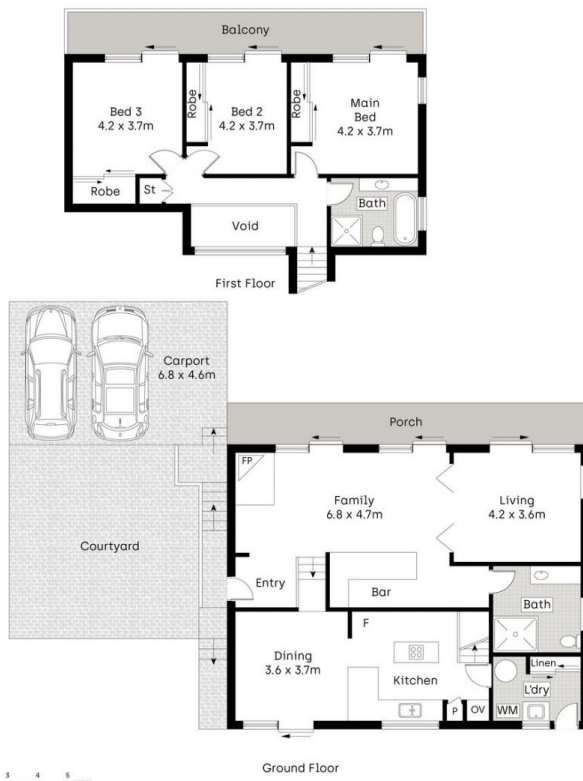
Features include:

Type : House
Land Size : 701.7 sqm
View : <https://www.mitchellestateagents.com.au/8452690>



James Mitchell
0405 951 570

[For full version visit the website](https://www.mitchellestateagents.com.au)



Whilst bwrn.com.au has made every attempt to ensure the accuracy of the floor plan contained here, measurements are approximate and no responsibility is taken for any error, omission, or mis-statement. This plan is for illustrative purposes only.

3 Bangalee Place, Bangor

Mitchell Estate Agents