

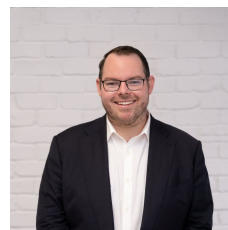


## 2 Cudal Place Kirrawee NSW

4 1 2

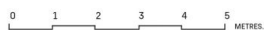
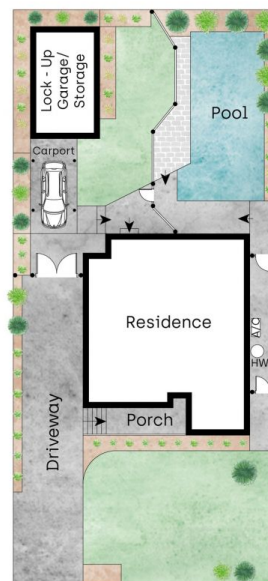
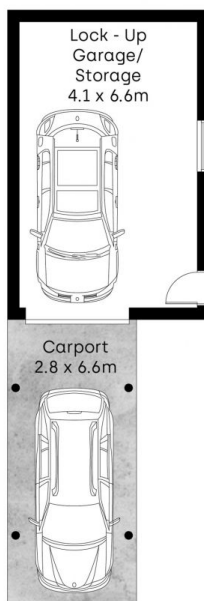
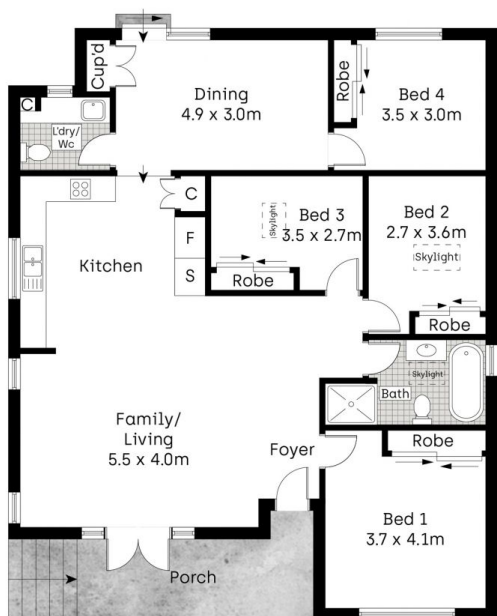
Perfectly positioned within a family-friendly cul-de-sac location, this immaculately presented and recently renovated single-level residence offers a superb blend of charm, comfort, and functionality. Situated in a sought-after Kirrawee South pocket, the home enjoys a tranquil yet convenient locale just minutes from South Village, quality schools, parklands, and transport nearby. Ideal for growing families or downsizers seeking generous proportions without the hassle of stairs, the light-filled floorplan is designed for relaxed living, and features a generous open-plan layout that encompasses an ideal flow from the main living area, kitchen and dining area, seamlessly connected to a sunlit rear yard and sparkling in-ground pool.

**Type** : House  
**Land Size** : 531.1 sqm  
**View** : <https://www.mitchellestateagents.com.au/8412939>



**James Mitchell**  
0405 951 570

[For full version visit the website](https://www.mitchellestateagents.com.au)



Whilst [bwrn.com.au](http://bwrn.com.au) has made every attempt to ensure the accuracy of the floor plan contained here, measurements are approximate and no responsibility is taken for any error, omission, or mis-statement. This plan is for illustrative purposes only.

2 Cudal Place, Kirrawee

**Mitchell** Estate Agents