






5/192-194 Sylvania Road Miranda NSW

3  **2**  **2** 

Privately set away from the street, this well-maintained single-level brick villa home offers an easy-care lifestyle oasis located in a quiet and secure residential complex. Boasting an impressively versatile floorplan with bright, airy interiors throughout, the home caters equally to downsizers, young families, and investors seeking low maintenance living in a tightly held locale, just moments to Miranda's vibrant shopping precinct, transport, and quality schools.

Features Include:

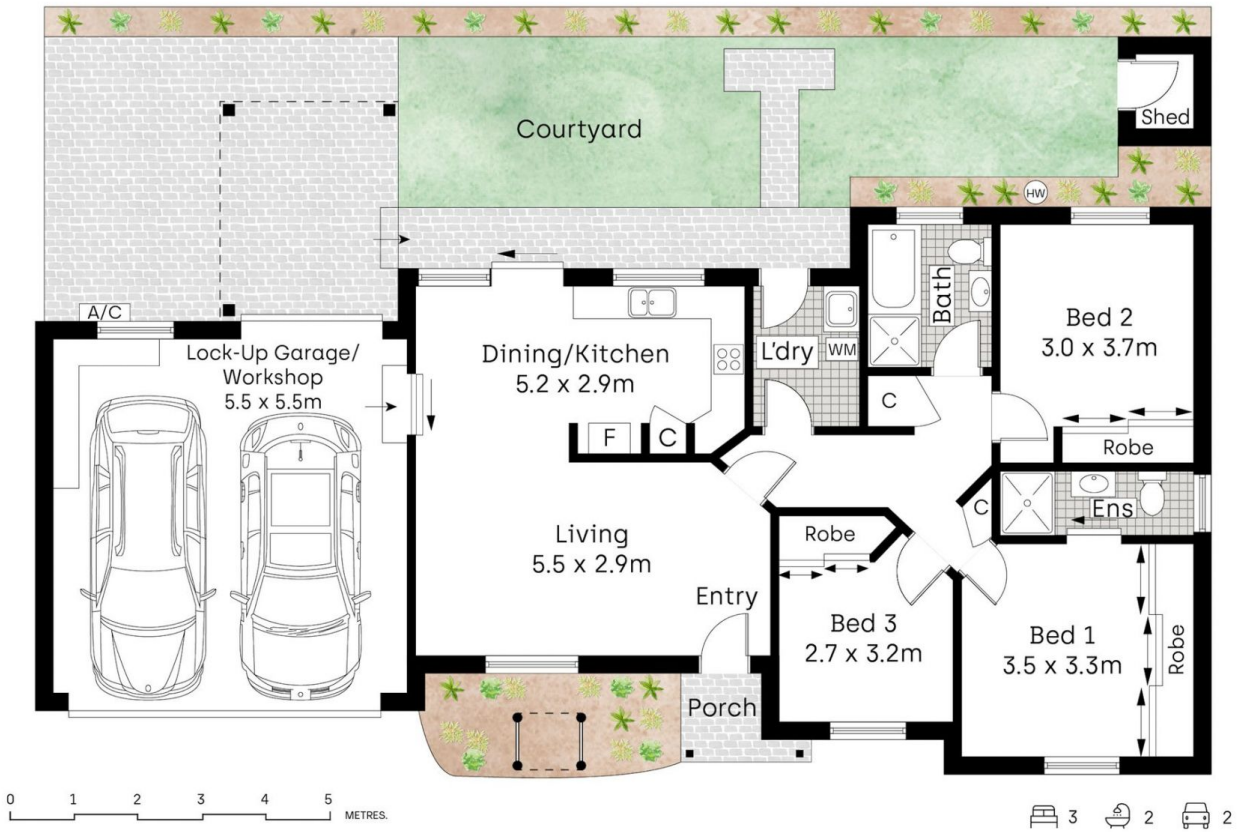
- Light-filled open-plan lounge room positioned at the front of the home, flowing seamlessly into the adjoining dining and kitchen areas, with direct sliding door access to the

[For full version visit the website](https://www.mitchellestateagents.com.au/8406843)

Type : Villa
Price : \$ 1,460,000
Land Size : 194 sqm
View : <https://www.mitchellestateagents.com.au/8406843>



James Mitchell
0405 951 570



Whilst bwrn.com.au has made every attempt to ensure the accuracy of the floor plan contained here, measurements are approximate and no responsibility is taken for any error, omission, or mis-statement. This plan is for illustrative purposes only.

5/192-194 Sylvania Road, Miranda

Mitchell Estate Agents