

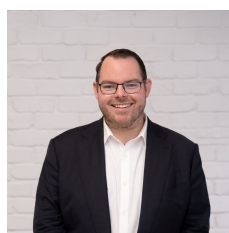


348 President Avenue Gymea NSW

4 1 3

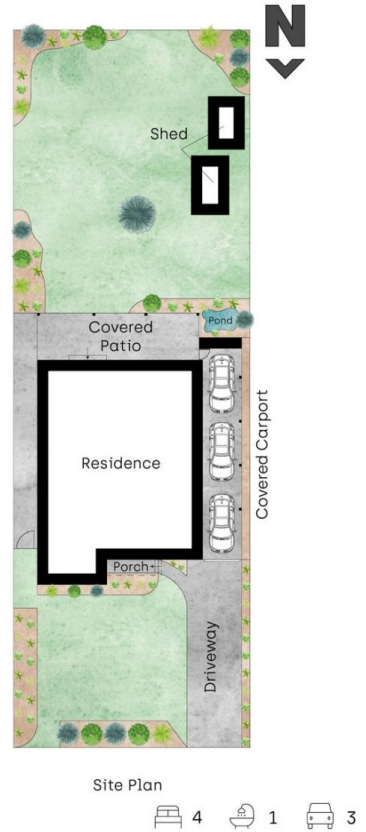
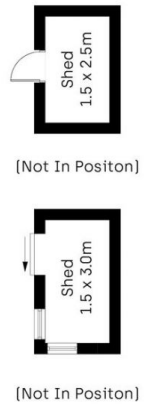
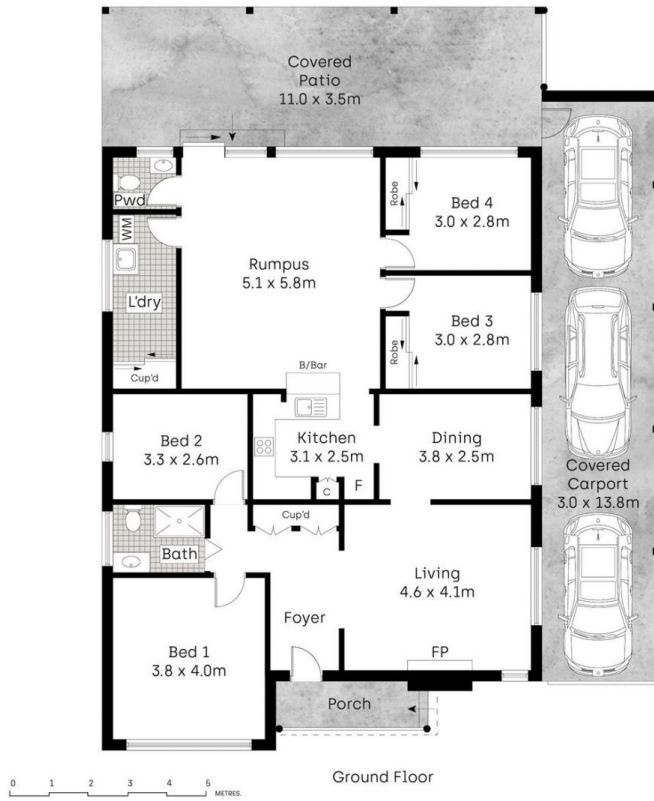
Offered for the first time in over 40 years, this much-loved family home features a practical layout, ideal for comfortable family living while exuding charm and endless potential. Positioned in the heart of Gymea, this well-maintained family residence is located just moments from Gymea village, train station and local amenities. At the heart of the home lies an immaculate original kitchen, positioned adjacent to the formal dining area and a spacious family room, perfect for everyday living and entertaining. A formal lounge adds to the versatile living spaces, while a modernised bathroom blends seamlessly with the home's classic charm. Set on a generous parcel of 720.8 sqm, the property provides ample outdoor space with covered entertaining areas and large grassy yard, with exciting potential for future enhancements or extensions

Type : House
Land Size : 720.8 sqm
View : <https://www.mitchellestateagents.com.au/8406842>



James Mitchell
0405 951 570

[For full version visit the website](https://www.mitchellestateagents.com.au)



Whilst bwwm.com.au has made every attempt to ensure the accuracy of the floor plan contained here, measurements are approximate and no responsibility is taken for any error, omission, or mis-statement. This plan is for illustrative purposes only.

348 President Avenue, Gymea

Mitchell Estate Agents