



25 Boatwright Avenue Lugarno NSW

4 2 2

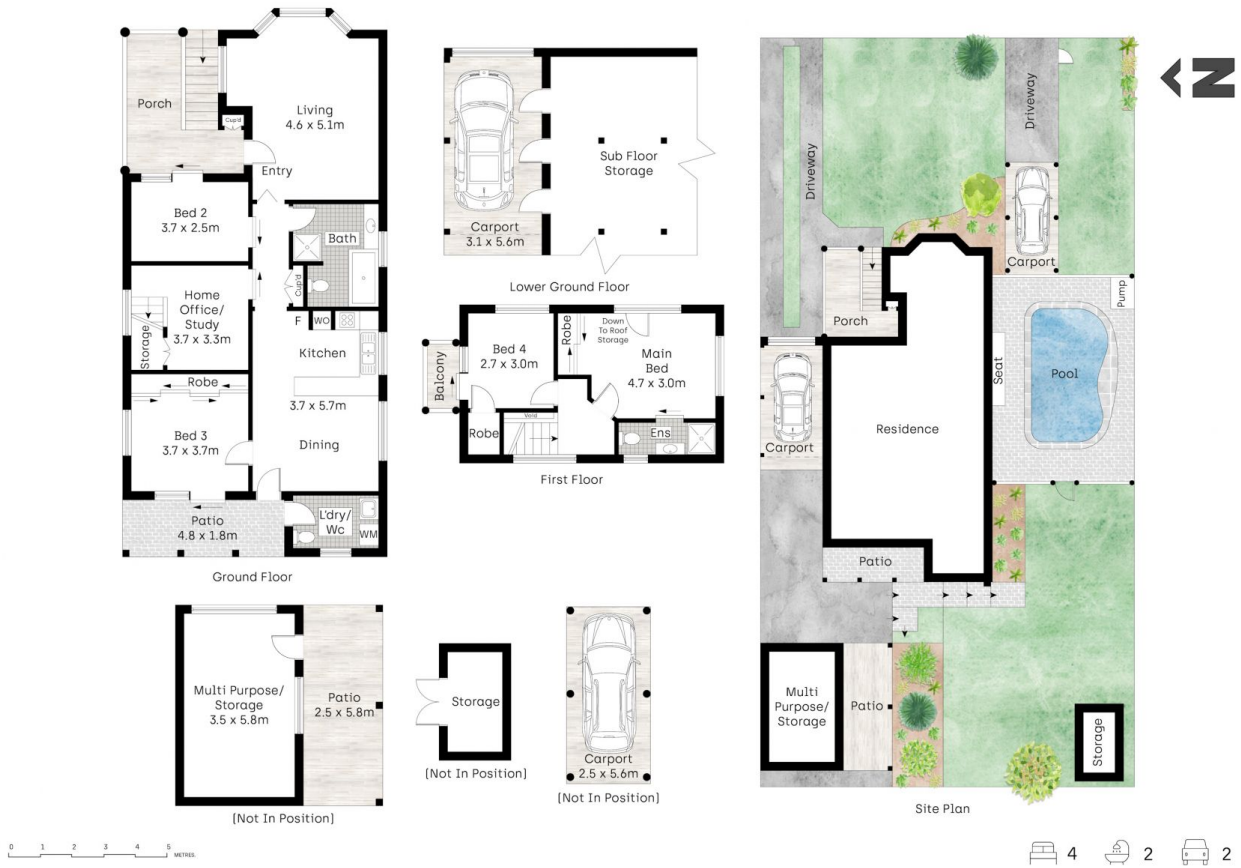
Offered to the market for the first time in over 40 years, this solid family home presents an outstanding opportunity to secure a generous residence on an ideal parcel in one of Lugarno's most tightly held pockets. Positioned on a considerable 632.3 sqm block, this character-filled property offers an expansive and versatile layout, ideal for families, and renovators seeking to capitalise on a family friendly location and future potential. With a broad street presence and generous proportions throughout, the home provides a comfortable haven within a peaceful, family-focused setting. Conveniently located moments from Lugarno Public School, Georges River College, local shops, cafes, and Gannons Park, this is a rare chance to enjoy a spacious home with endless future possibilities.

Type : House
Land Size : 632.3 sqm
View : <https://www.mitchellestateagents.com.au/8386497>



James Mitchell
0405 951 570

[For full version visit the website](https://www.mitchellestateagents.com.au)



Whilst bwrn.com.au has made every attempt to ensure the accuracy of the floor plan contained here, measurements are approximate and no responsibility is taken for any error, omission, or mis-statement. This plan is for illustrative purposes only.

25 Boatwright Avenue, Lugarno

Mitchell Estate Agents