



5/12-14 Premier Street Gymea NSW

2  1  1 

Ideally positioned just a short walk to Gymea Village, and privately situated within a boutique complex of only seven homes, this modern north-facing townhouse offers low maintenance living in an ultra-convenient locale. Encompassing a spacious floorplan with sunlit living, generously sized bedrooms and a fully enclosed rear courtyard, ideal for entertaining, this well-presented home will hold great appeal with easy access to beautiful Gymea village shops and amenities.

Features include:

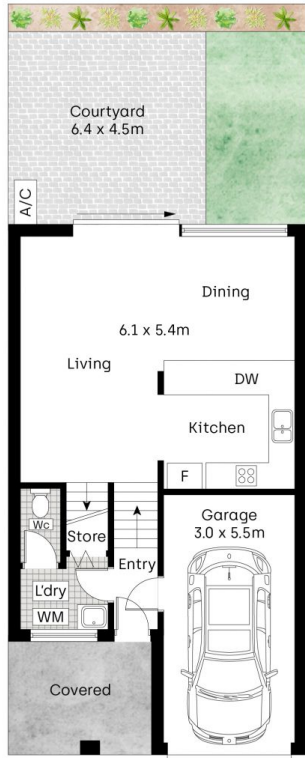
- Two large carpeted bedrooms, each on separate levels featuring air-con, and large built-in robes, main bedroom with access to front patio

[For full version visit the website](https://www.mitchellestateagents.com.au/8230422)

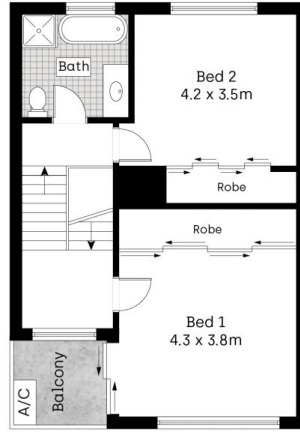
**Type** : Townhouse  
**Land Size** : 149 sqm  
**View** : <https://www.mitchellestateagents.com.au/8230422>



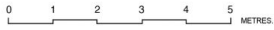
**James Mitchell**  
0405 951 570



Ground Floor



First Floor



Whilst [bwr.com.au](http://bwr.com.au) has made every attempt to ensure the accuracy of the floor plan contained here, measurements are approximate and no responsibility is taken for any error, omission, or mis-statement. This plan is for illustrative purposes only.

5/12-14 Premier Street, Gymea

**Mitchell** Estate Agents