



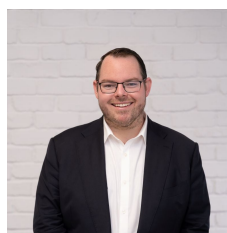
10 Ischia Street Cronulla NSW

3 3 2

Privately positioned along the prestigious South Cronulla peninsular within metres of The Esplanade, Oak Park and Bass & Flinders point, this spacious, exclusive ocean-view brick-residence offers the ideal low-maintenance coastal lifestyle with relaxing ocean views to towards Jibbon Beach, Bundeena and beyond enhancing the homes calm and serene ambiance. Offering modern comfort and versatility in layout, this immaculate home boasts open plan living on the first floor with kitchen, living and dining spaces affording stunning vistas, additionally three generous carpeted bedrooms (potential fourth bedroom upstairs), with two sizeable full bathrooms all uniting with high ceilings and quality fixtures and fittings throughout. The home boasts double garaging and a low maintenance yard complete with alfresco entertaining and level lawn. Enjoy a

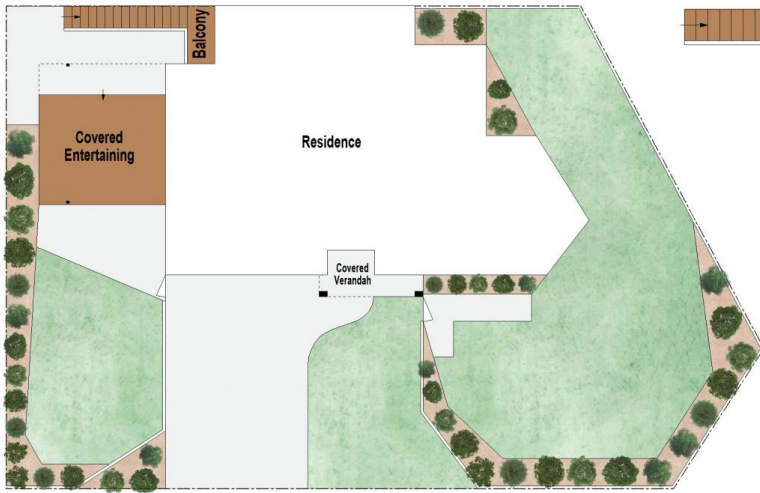
Type : House

View : <https://www.mitchellestateagents.com.au/8156197>

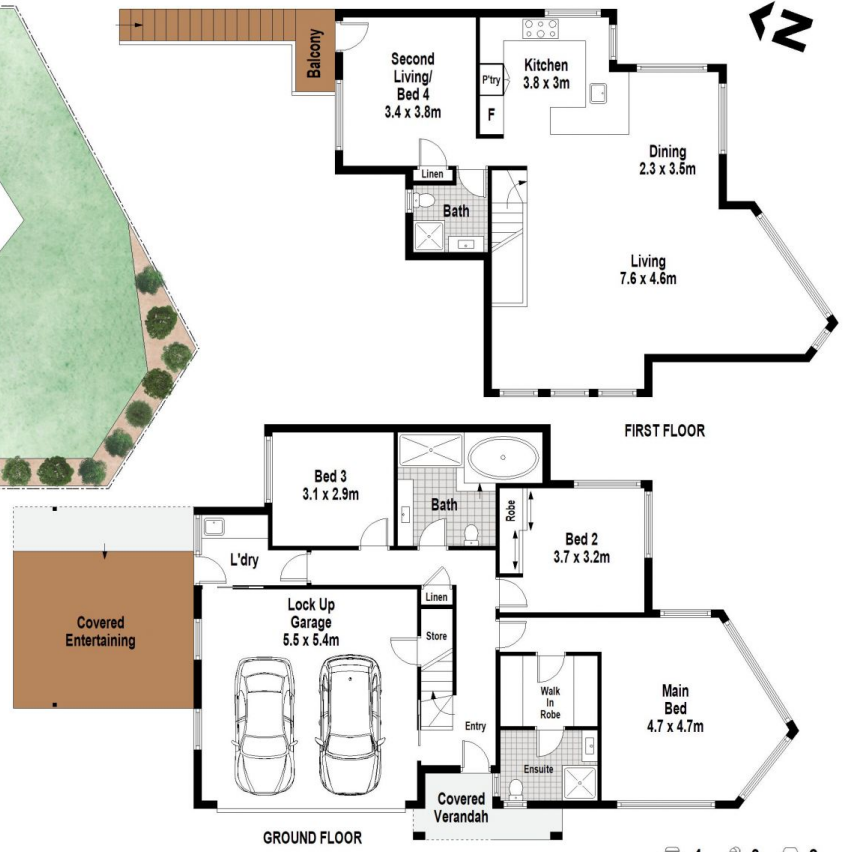


James Mitchell
0405 951 570

[For full version visit the website](https://www.mitchellestateagents.com.au)

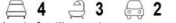
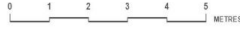


SITE PLAN (NOT TO SCALE)



FIRST FLOOR

GROUND FLOOR



Whilst bwr.com.au has made every attempt to ensure the accuracy of the floor plan contained here, measurements are approximate and no responsibility is taken for any error, omission, or mis-statement. This plan is for illustrative purposes only.

10 Ischia Street, Cronulla

Mitchell Estate Agents