

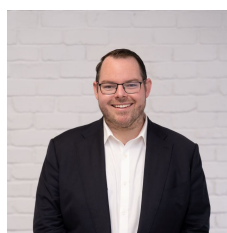
11/614 Princes Highway Kirrawee NSW

2 1 1

Tucked away and privately placed with a top-floor light-filled position, this beautifully updated and spacious two-bedroom apartment radiates a welcoming vibe and lifestyle appeal, situated just moments to Kirrawee village, train station and South Village precinct. Set away from the street and encompassing a versatile, and oversized free-flowing floorplan with a peaceful, leafy outlook, this spacious apartment would suit the discerning resident seeking the ideal low-maintenance, convenient lifestyle setting.

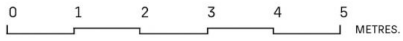
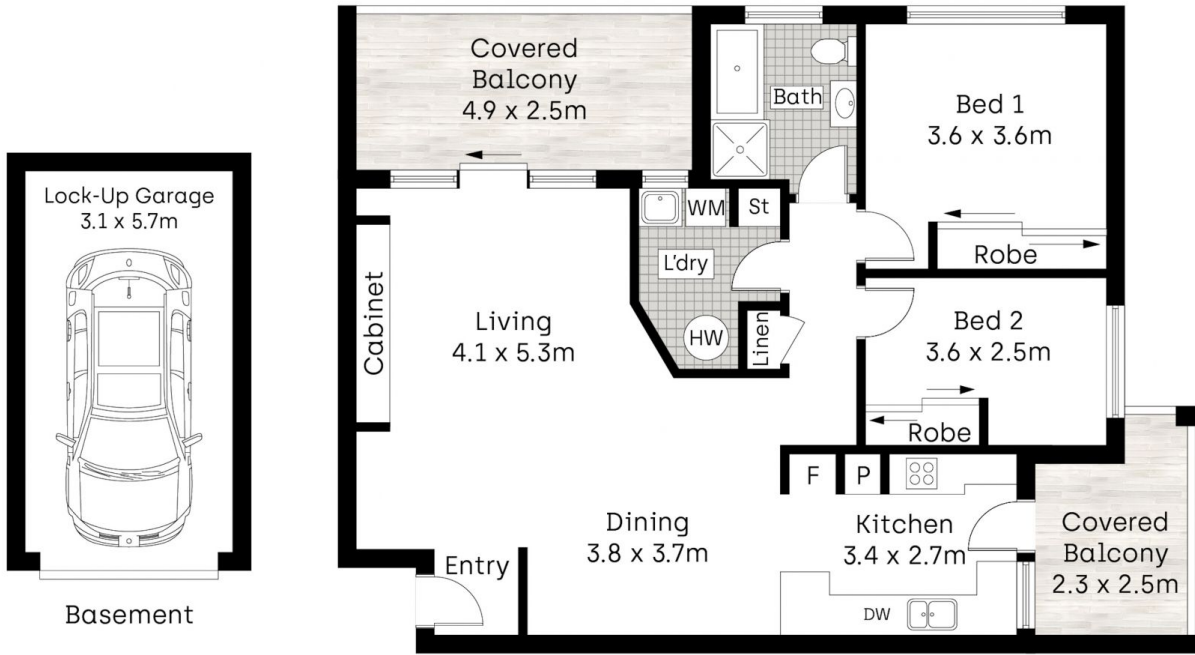
- Spacious, light and bright open-plan living and dining zones with stunning skylight, beautiful timber-style flooring, and split-system air-conditioning
- Immaculate kitchen with stone benchtops, quality

Type : Apartment
Land Size : 118 sqm
View : <https://www.mitchellestateagents.com.au/8112987>



James Mitchell
0405 951 570

[For full version visit the website](https://www.mitchellestateagents.com.au)



2 1 1

Whilst bwrn.com.au has made every attempt to ensure the accuracy of the floor plan contained here, measurements are approximate and no responsibility is taken for any error, omission, or mis-statement. This plan is for illustrative purposes only.

11/614 Princes Highway, Kirrawee

Mitchell Estate Agents